

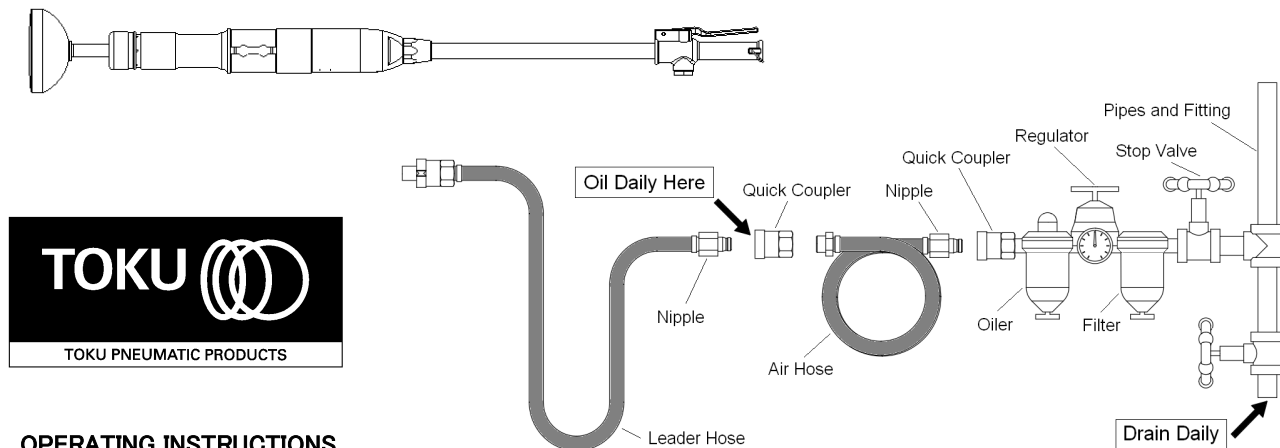
MAINTENANCE INSTRUCTIONS

AIR TAMPER

MODEL T-6



AIR HOSE AND HOSE CONNECTION



OPERATING INSTRUCTIONS

⚠ WARNING

Safety is a primary consideration when operating percussion tools. The following information outlines procedures which should be following to help insure a safe working environment to avoid personal injury.

1. ALWAYS WEAR APPROVED IMPACT RESISTANT EYE PROTECTION.
2. ALWAYS WEAR EAR PROTECTION.
3. ALWAYS WEAR GLOVES AND OTHER PROTECTIVE CLOTHING.
4. ALWAYS DIRECT EXHAUST AWAY FROM YOURSELF AND OTHERS IN THE AREA.
5. ALWAYS DISCONNECT TOOL FROM THE AIR SUPPLY WHEN NOT IN OPERATION. IF QUICK-DISCONNECT COUPLINGS ARE USED, SEPARATE THE COUPLING FROM THE TOOL WITH A LEADER HOSE.

LUBRICATION

To flush out GUM and dart – you should do the following two steps EACH DAY.

1. (Before the shift), pour a liberal quantity of gum solvent oil into the tool's air inlet.
2. Connect tool to air line and operate.

Repeat this procedure before storing the tool.

Air line lubricator should be used in conjunction with the integral oiler.

The important of adequate and continuous lubrication cannot be overemphasized.

A few minutes operation without oil may severely damage the valve parts, cylinder and piston.

AIR SUPPLY (minimum requirements)

1. Compressor / 10hp, 40CFM at 90psig (6.2bar).
2. When using two or more tools, all except leader hoses should be 1" or larger. (see diagram above for piping and fittings.)

FOR BEST OPERATION : Supply tool with 90psig (6.2bar) of clean, dry air.

Higher pressure drastically tool life and can void warranty.

LOSS OF POWER / ERRATIC ACTION (possible causes)

1. Reduce compressor output.
2. Excessive drain on air line.
3. Moisture or restricted pipes, hoses or fittings.
4. Improper size or poor condition of pipes, hoses or fittings.
5. Free running (or blank blow) can cause damage to the tool. Always hold the tool down to the work.

If everything else appears to be in order, then disassemble tool, replace worn or damaged parts, clean, reassemble and lubricate.

REPLACEMENT PARTS

Always use **GENUINE TOKU TOOLS Replacement Parts**.

When replacement parts are required, order by Parts Number and Description from the Parts List.

PRESS THE TAMPER WITH PROPER PRESSING FORCE

Press the Tamper with proper pressing force. Excess pressing force become less working efficiency or stop working. Maximum pressing force is up to 15kgf (33lb)

SPECIFICATIONS

Type No.	Piston Dia.		Piston Stroke		Number of Impacts	Net Weight		Overall Length		Air Consumption		Hose Size	
	(mm)	(in)	(mm)	(in)		(kg)	(lb)	(mm)	(in)	(m ³ /min)	(CFM)	(mm)	(in)
T-6	38.1	1-1/2	140	5-1/2	600	16.7	36.7	1,240	48-7/8	1.10	38.5	12.7	1/2

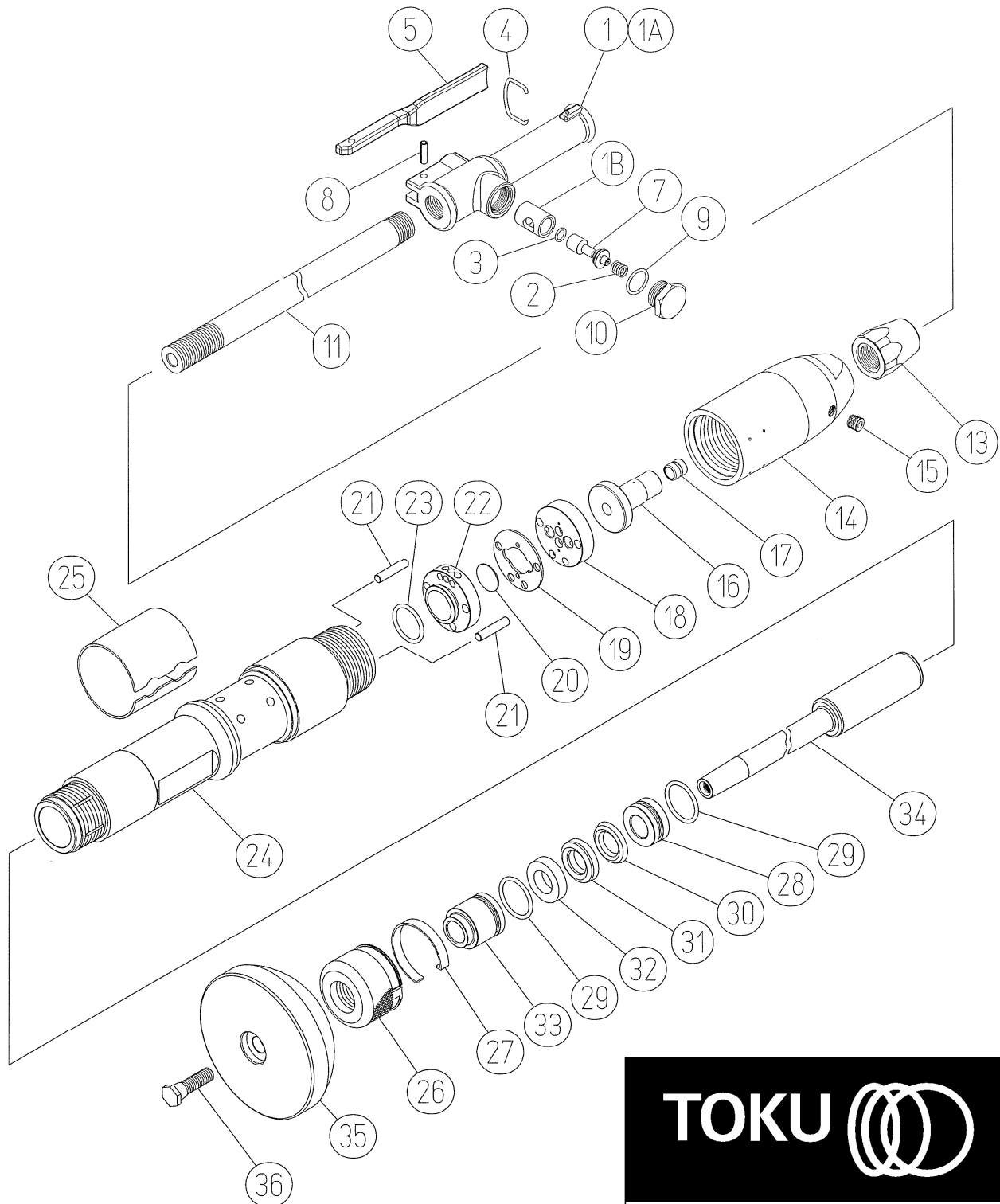
T-6

Parts List

Exploded View



www.air-allied.com.au





				Spare Parts Service Chart					
				MUST REPLACE	100%				
				HIGH WEAR	70%				
				MEDIUM WEAR	50%				
				LOW WEAR	30%				
				NON WEAR	10%				
				SUBJECT TO EXTERNAL DAMAGE					
Symbol No.	Parts No.	Q'ty Req.	Description						
1	41060145A	1	Handle W/Bushing (Incl. Sym. No. 1A and 1B)					X	
1A	410601450	(1)	Handle Bare					X	
1B	410601090	(1)	Throttle Valve Bush					X	
2	130801078	1	Throttle Valve Spring			X			
3	131108008	1	O-Ring P-10			X			
4	130801079	1	Throttle Lever Ring					X	
5	410601110	1	Throttle Lever					X	
7	410601080	1	Throttle Valve					X	
8	130606022	1	Spring Pin 6X22					X	
9	131101020	1	O-Ring P-22					X	
10	134905020	1	Throttle Valve Cap					X	
11	410601541	1	Connecting Pipe NPS 3/4					X	
13	410601550	1	Connecting Pipe Lock Nut					X	
14	410601031	1	Cylinder Cap NPS 3/4					X	
15	134903002	1	Plug NPTF 1/4					X	
16	410601040	1	Cylinder Cap Bush					X	
17	410601590	1	Oil Feeder					X	
18	410601260	1	Upper Valve Plate					X	
19	410601280	1	Center Valve Plate					X	
20	410601150	1	Valve					X	
21	130401092	2	Valve Knock Pin			X			
22	410601270	1	Lower Valve Block					X	
23	131101033	1	O-Ring P-32			X			
24	410601010	1	Cylinder					X	
25	410601601	1	Exhaust Deflector					X	
26	410601610	1	Packing Nut					X	
27	410601620	1	Lock Retainer					X	
28	410601320	1	Inner Bush (Upper)					X	
29	131101035	2	O-Ring P-35	X					
30	136101034	1	Packing (Upper)	X					
31	136101035	1	Packing (Center)	X					
32	136101036	1	Packing (Lower)	X					
33	410601330	1	Outer Bush					X	
34	410601290	1	Piston				X		
35	410601650	1	Butt (Iron)					X	
36	410601630	1	Clamp Screw					X	
800	410601660	(1)	Butt (Aluminum)					X	
802	41060145D	(1)	Handle CP (Incl. Sym. No. 1, 2, 3, 4, 5, 7, 8, 9 and 10)						
828	41060130D	(1)	Packing CP (Incl. Sym. No. 30, 31 and 32)	X					

This service chart is a guide to expectant life of component parts.

The replacement levels are based on average tool usage over a one year period.

Example : For 10 tools in use: 10 must —replace items will be required per year, 7 high wear items, etc.

Note: Quantities must be increased if the tool is in more service or continuous usage.

LEGEND

X—Type of wear, if no other comments apply.

A—Easily lost or damaged during disassembly and reassembly.

MEMO
